



**Horsham  
Green Spaces**

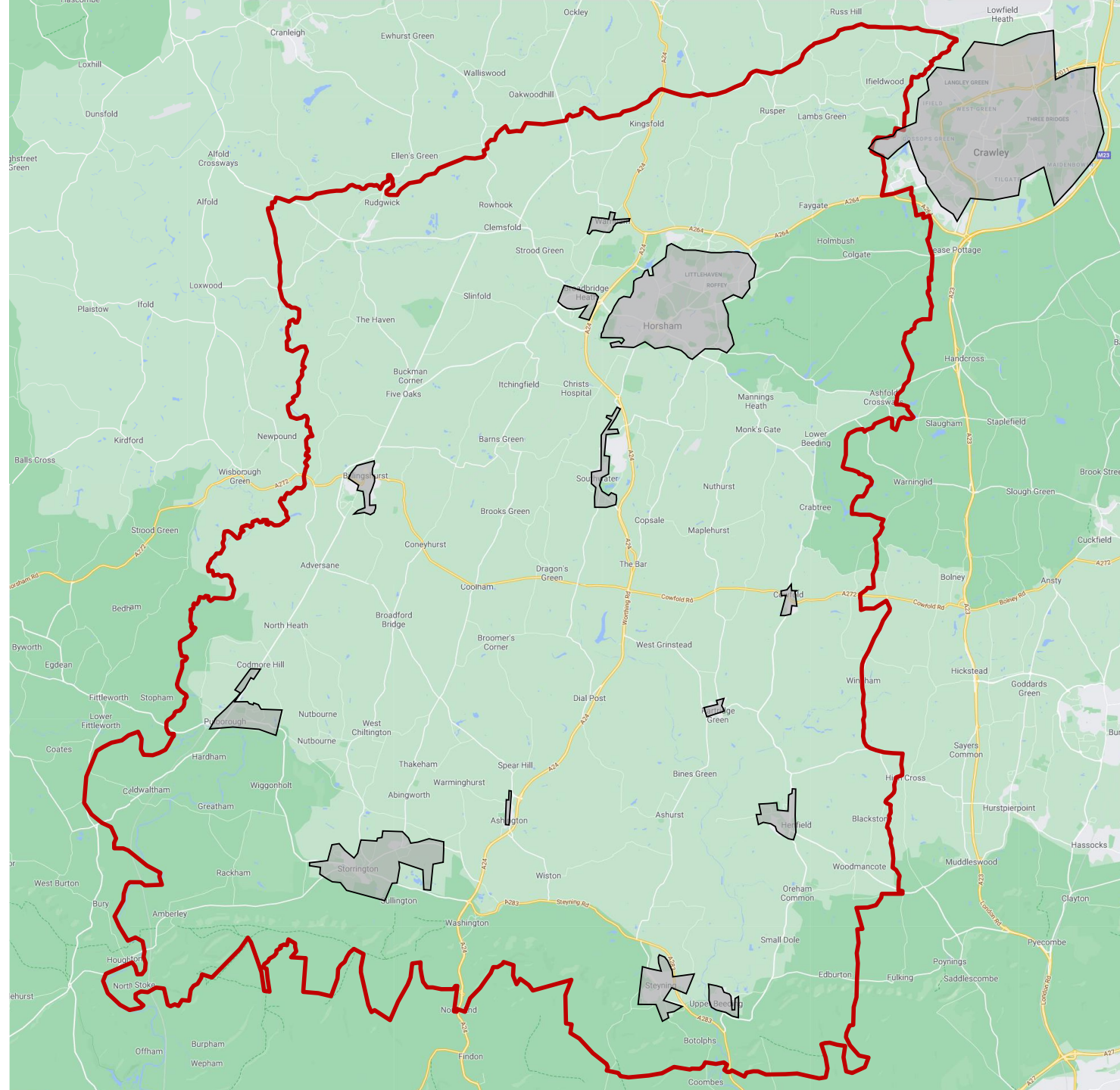
# **Growing Urbanisation of Horsham District** *and its* **Impact on Wildlife Networks**



# Urbanisation 1980

Grey shading: Larger areas of urban development

Red line: Horsham District Boundary



- The grey shaded areas are land occupied by larger urbanised areas within Horsham District
- The boundary of each area was determined from historic aerial photographic imagery available in Google Earth.

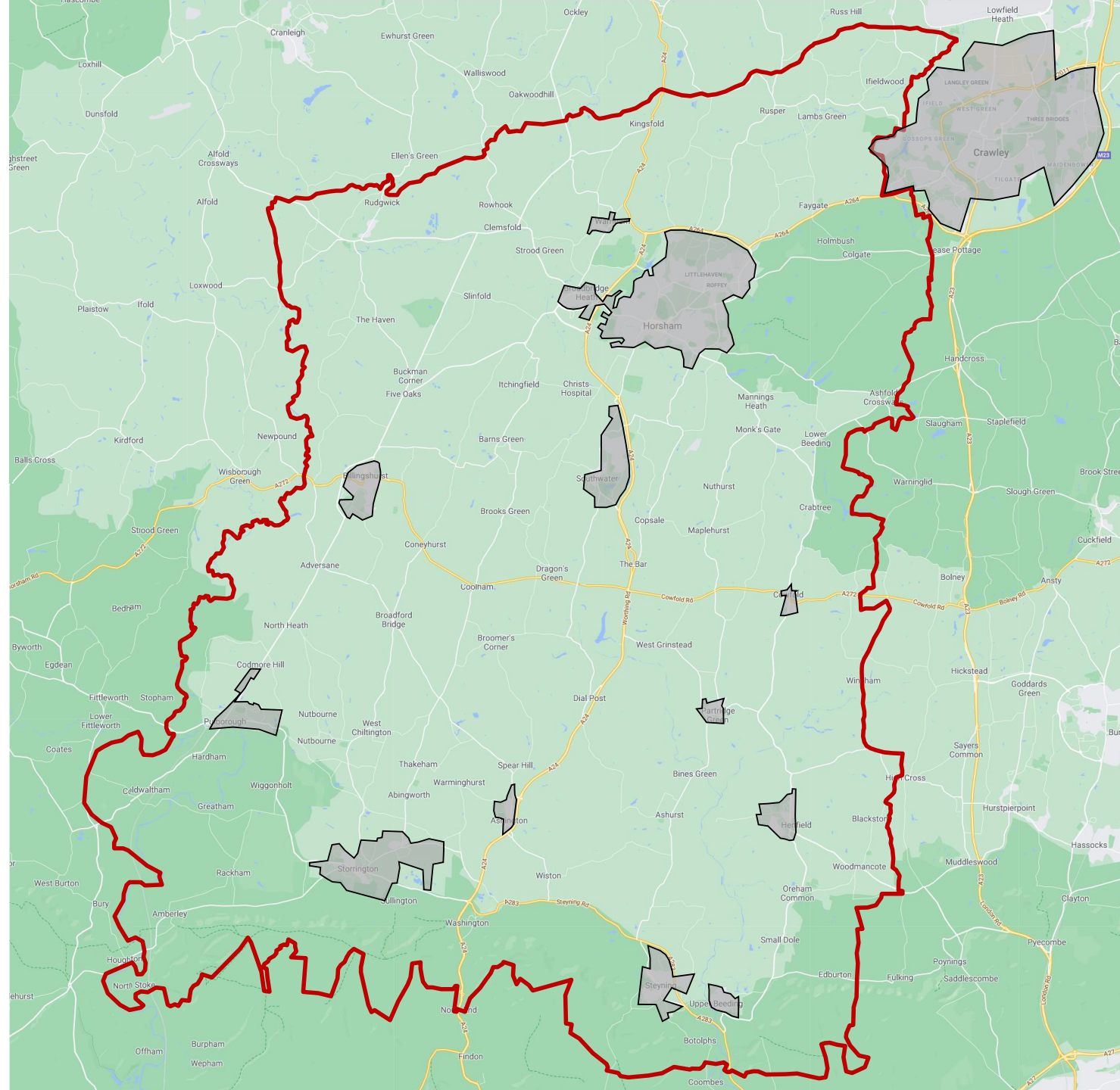


**Horsham Green Spaces**

# Urbanisation 2000

Grey shading: Larger areas of urban development

Red line: Horsham District Boundary



- Crawley expands westwards to the Horsham District border
- Horsham Town expands northwards to the A264
- Large expansion at Southwater, Billingshurst and Ashington
- Smaller expansion at Steyning and Henfield

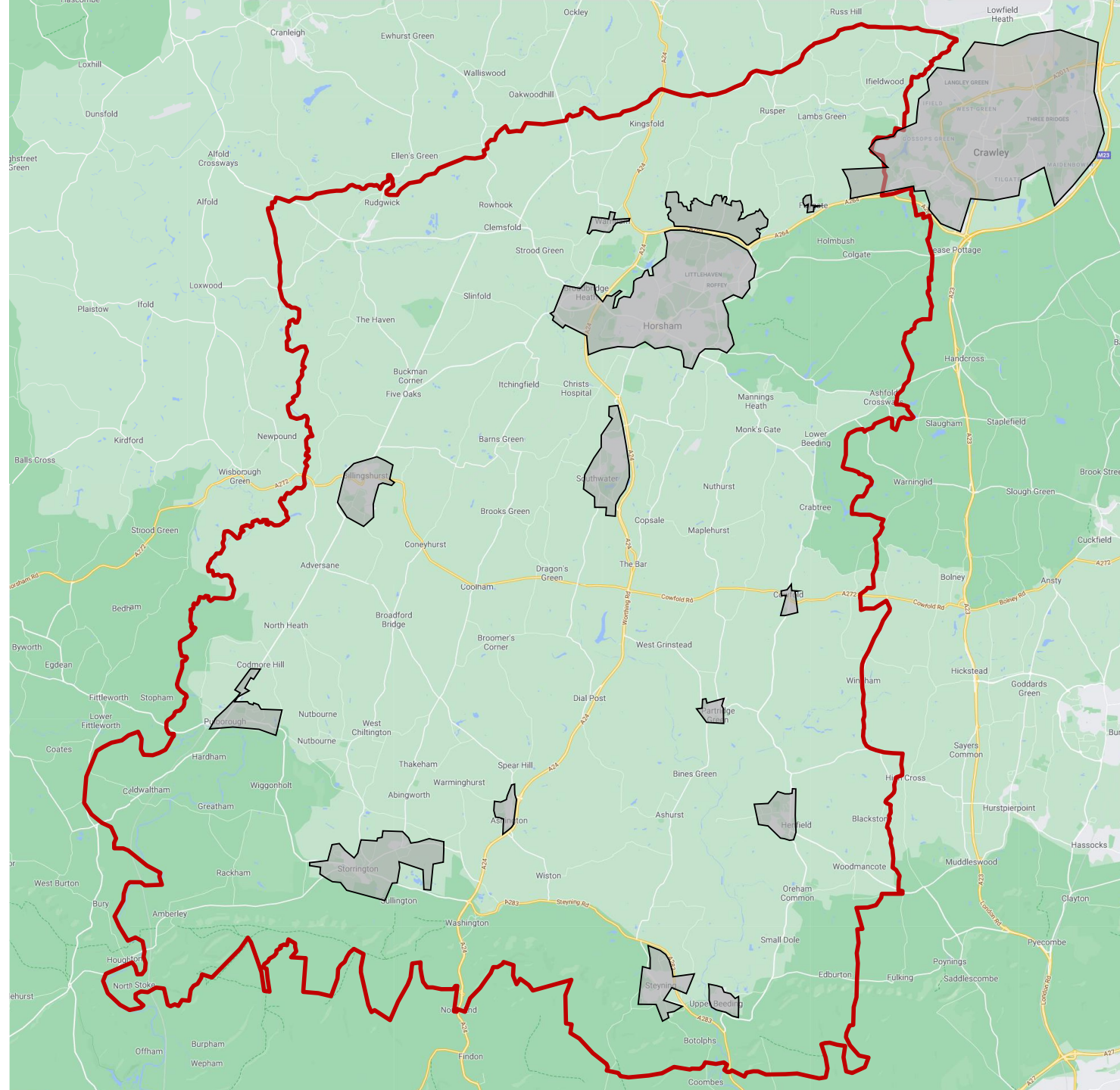


**Horsham Green Spaces**

# Urbanisation 2020

Grey shading: Larger areas of urban development

Red line: Horsham District Boundary



- Crawley expands westwards across the Horsham District border
- The 2,500 home North Horsham development is approved
- Southwest Horsham and Broadbridge Heath expand substantially
- Faygate, Southwater, Billingshurst and Henfield grow

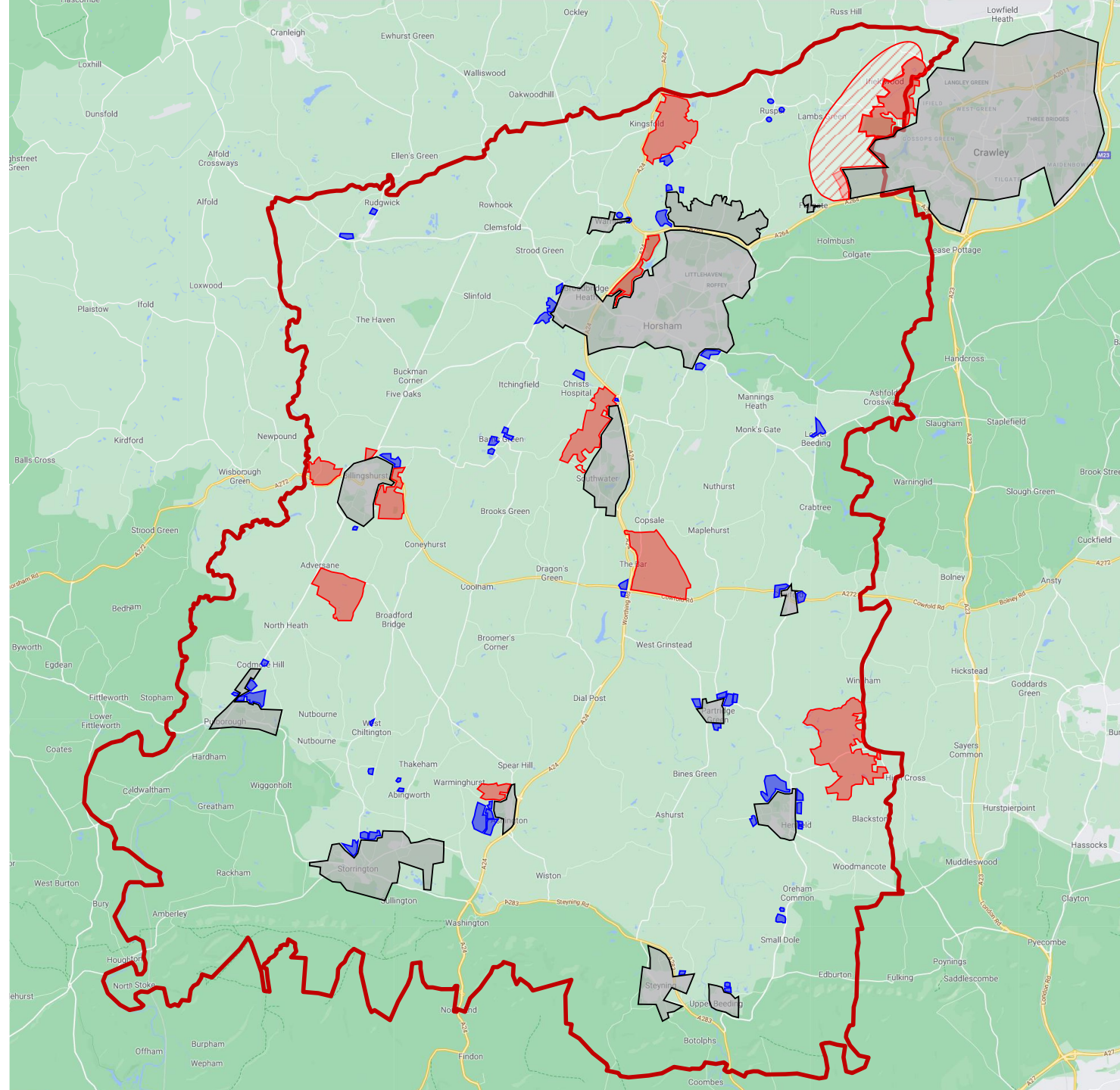


**Horsham Green Spaces**

# Horsham District Local Plan Sites 2020

Grey shading: Larger areas of urban development  
 Red line: Horsham District Boundary  
 Red shading: Strategic sites  
 Blue shading: Small sites

Red hatching: Homes England, 11,000 Dwelling Concept Area



- The Homes England proposal extends west to Faygate.
- A single field stands between Crawley / Faygate and Horsham that prevents coalescence into a single urban area.
- The Southwater proposal reduces the Horsham / Southwater gap.
- The Buck Barn proposal is just 650 metres south of Southwater.
- Planning choices risk creating a single coalesced urban area comprising Crawley, Faygate, Horsham, Broadbridge Heath, Southwater and Buck Barn.
- Major urbanisation is also being considered at Billingshurst, Adversane, near Henfield (Mayfield) and Ashington.



**Horsham  
Green Spaces**

Peter Simpson  
[horshamgreenspaces@gmail.com](mailto:horshamgreenspaces@gmail.com)  
 Version 9 – 12<sup>th</sup> May 2021

*Sites are as listed in the Regulation 18 Local Plan consultation published in February 2020.*

*At the time of writing, no decision had been made on which sites would be selected.*

## Threats to Wildlife Sites

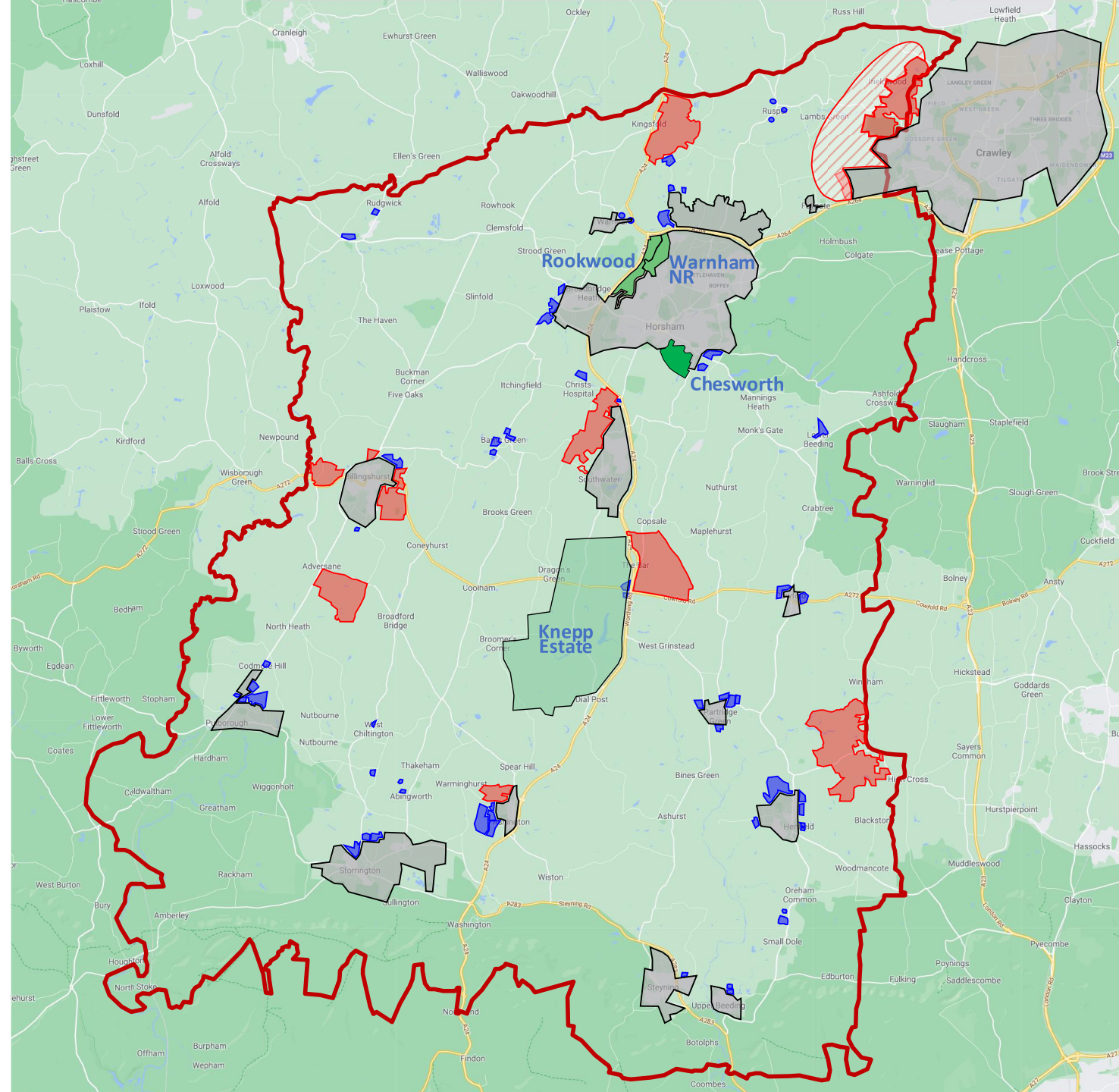
Grey shading: Larger areas of urban development

Red line: Horsham District Boundary

Red shading: Strategic sites

Blue shading: Small sites

Green shading: Knepp Estate, Warnham Nature Reserve, Rookwood and Chesworth Farm



- Coalescence to the south and west of Horsham threatens key wildlife sites like Warnham Nature Reserve, Rookwood and Chesworth Farm.
- Important green corridors around and through existing urban areas are threatened by development and coalescence.
- A United Kingdom rewilding exemplar, the Knepp Estate, is threatened by development at Buck Barn.









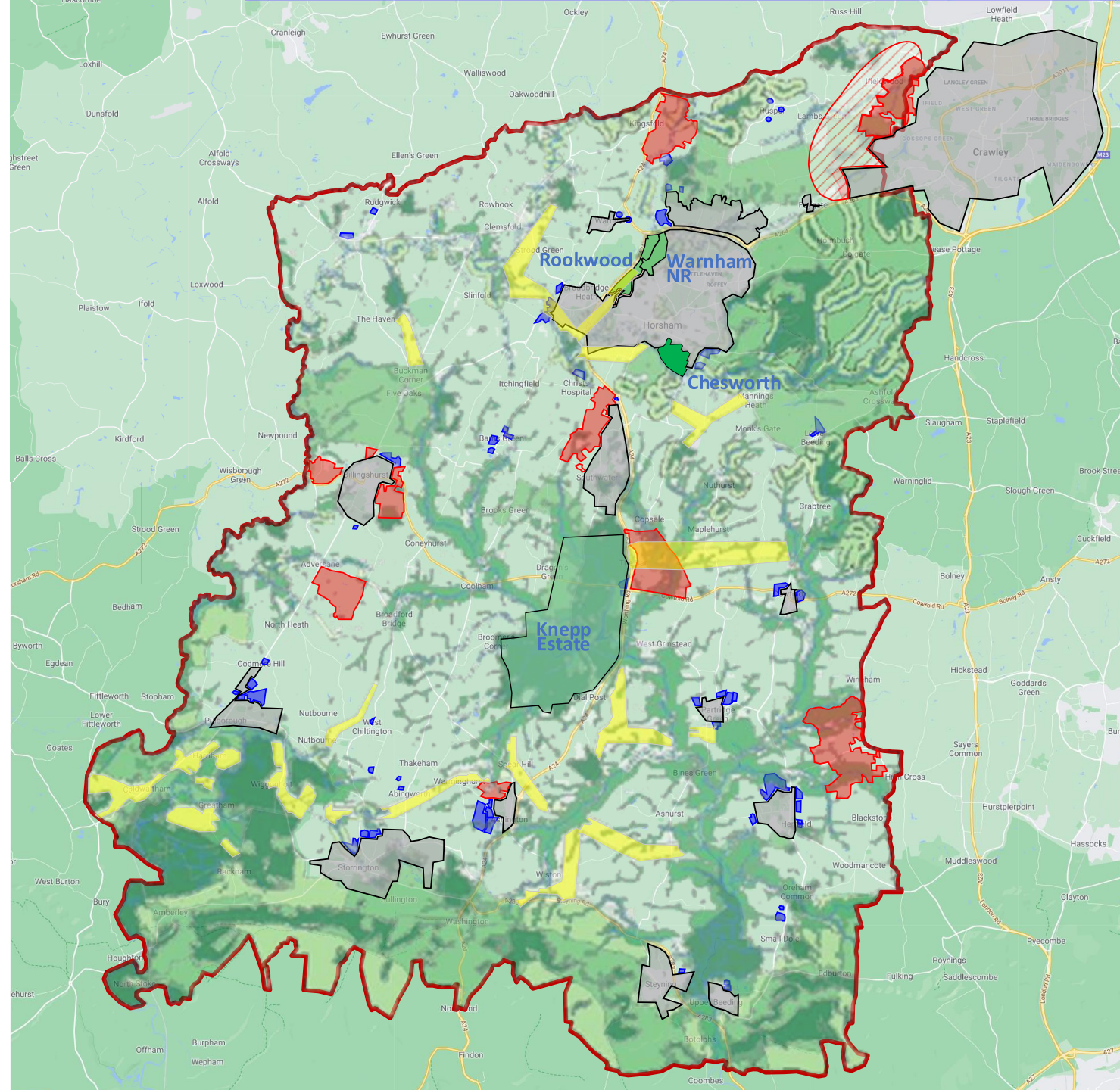
**Horsham  
Green Spaces**

Peter Simpson  
[horshamgreenspaces@gmail.com](mailto:horshamgreenspaces@gmail.com)  
 Version 9 – 12<sup>th</sup> May 2021

# Wilder Horsham District – Nature Recovery Network

Grey shading: Larger areas of urban development  
 Red line: Horsham District Boundary  
 Red shading: Strategic sites  
 Blue shading: Small sites

-  Watercourses
-  Core sites with high nature value
-  Very high habitat potential
-  High habitat potential
-  Buffer zones for core sites
-  Potential corridors and stepping stones



- The habitat information on this slide was developed by Sussex Wildlife Trust.
- Recovery network corridors are the means to enable wildlife movement through well managed porous land.
- The threat to the Warnham Nature Reserve / Boldings Brook / Red River wildlife corridor from development at Rookwood is clear.
- The threat to Knepp’s eastward wildlife corridor from development at Buck Barn is clear.



**Horsham Green Spaces**







Peter Simpson  
[horshamgreenspaces@gmail.com](mailto:horshamgreenspaces@gmail.com)  
 Version 9 – 12<sup>th</sup> May 2021

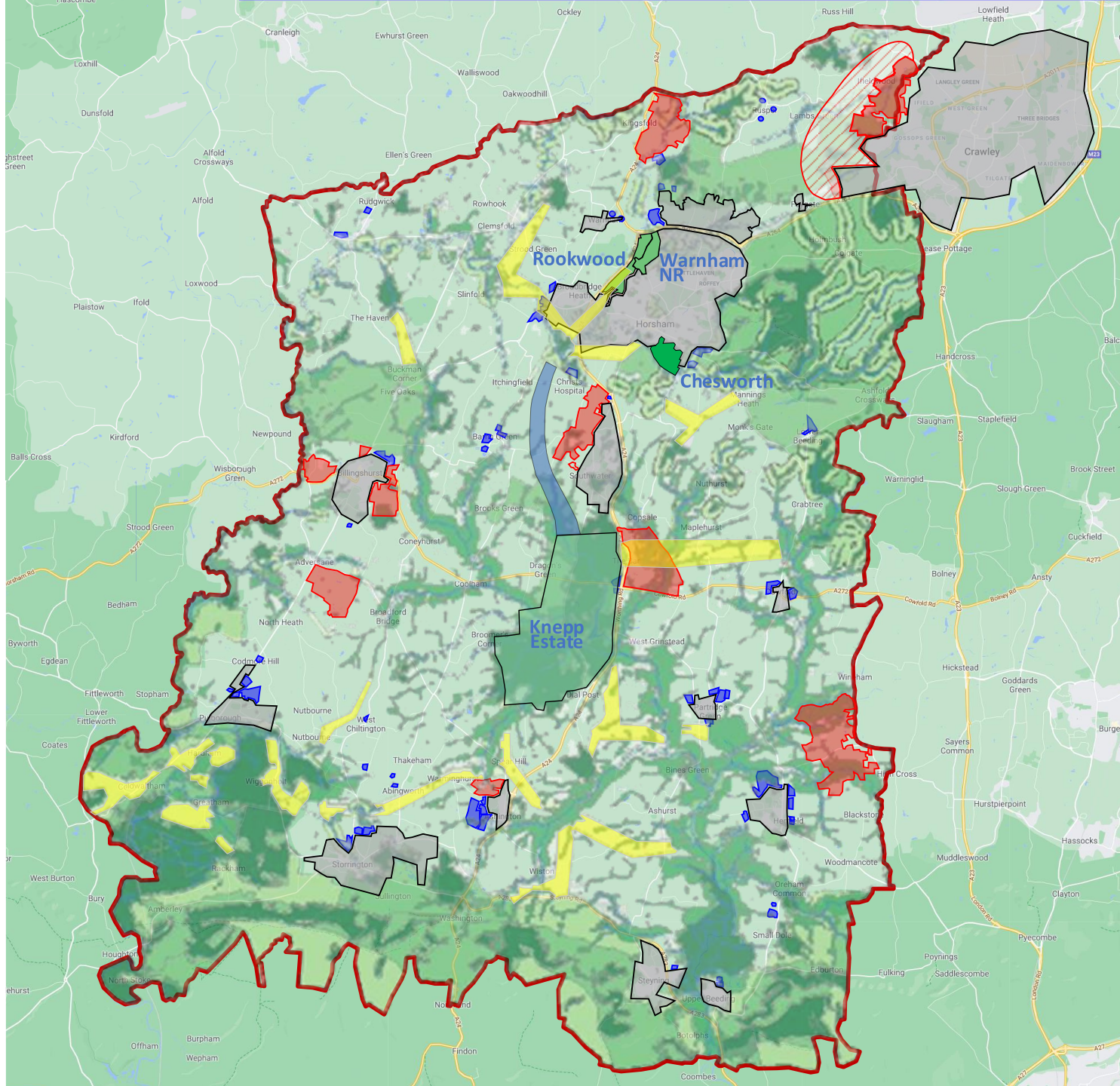
*Habitat information comes from a Sussex Wildlife Trust draft map reproduced from a representation to Horsham District Council by the Knepp Estate in April 2021.*

# Wilder Horsham District – Nature Recovery Network

Grey shading: Larger areas of urban development  
 Red line: Horsham District Boundary  
 Red shading: Strategic sites  
 Blue shading: Small sites

Blue – HGS suggested corridor

-  Watercourses
-  Core sites with high nature value
-  Very high habitat potential
-  High habitat potential
-  Buffer zones for core sites
-  Potential corridors and stepping stones



- HGS suggests that a further wildlife corridor be considered, shown in blue.
- This corridor would extend northwest from Knepp to Christ’s Hospital and link with the high potential habitat south of Horsham.
- The link will enhance wildlife movement between Adur tributaries in the south of the district and Arun tributaries in the north.



**Horsham Green Spaces**

*Habitat information comes from a Sussex Wildlife Trust draft map reproduced from a representation to Horsham District Council by the Knepp Estate in April 2021.*